



SOLENT CURRENTS 2017 CURRENT VIEWER

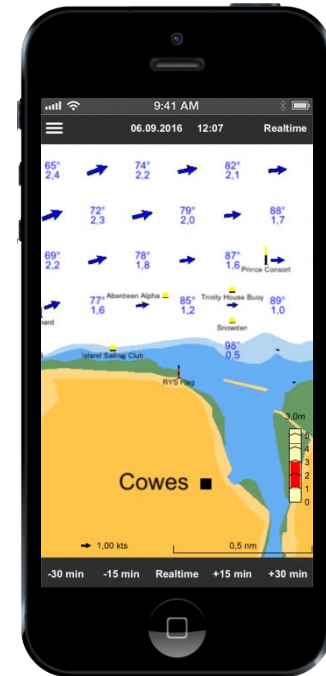
FACT SHEET

www.buell-software.com



FEATURES

- High resolution tidal currents 2017
- Currents at realtime or selected time
- GPS position tracking
- The Solent offline maps



SOLENT CURRENTS 2017



CURRENT VIEWER



→ REQUIREMENTS

- IOS 8 and up
- iPhone or iPad
- Well performing device recommended

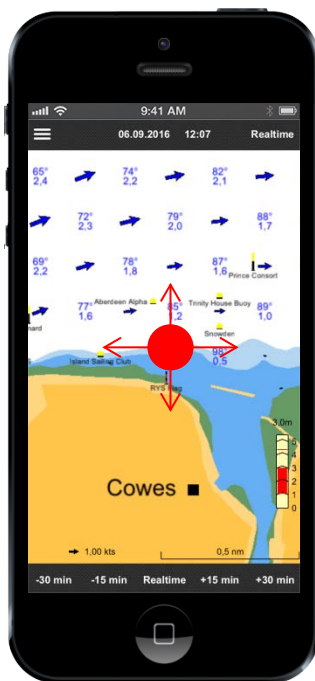
→ SOLENT CURRENTS 2017
→ CURRENT VIEWER



GESTURES

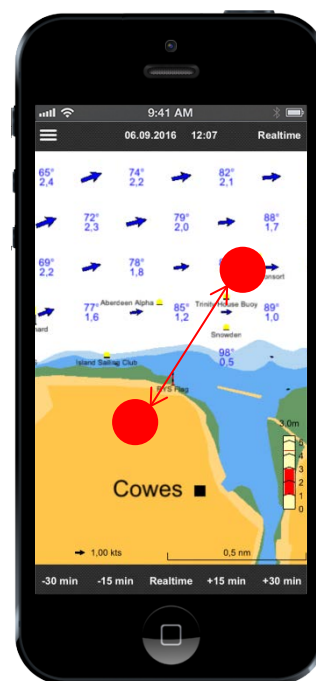
Move map

Single finger gesture



Zoom map

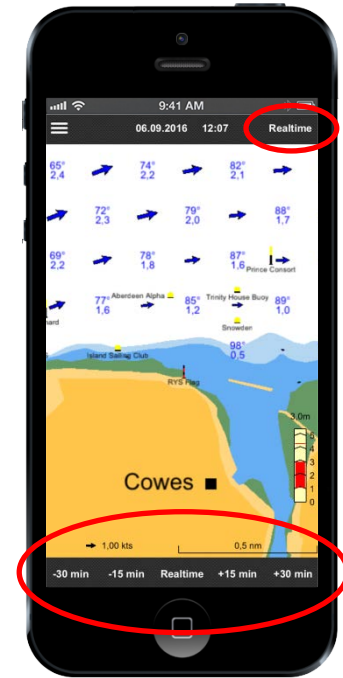
Double finger gesture



SOLENT CURRENTS 2017 CURRENT VIEWER

→ TIME SHIFTING

- In **Realtime** mode time and charts update continuously every 15 seconds
- Realtime setting is indicated in upper bar right
- Lower bar provides buttons to shift time forward or backward (e.g. **-30 min**)

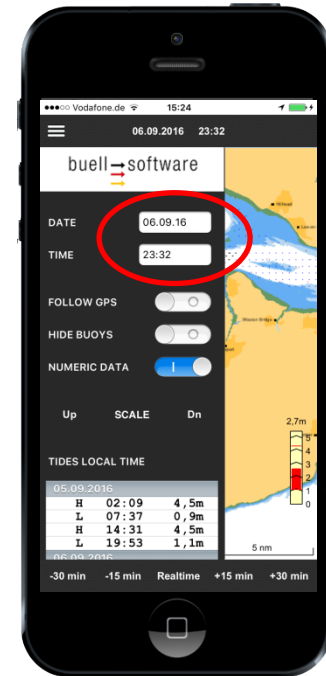


→ SOLENT CURRENTS 2017 → CURRENT VIEWER →



DATE & TIME

- Set fixed date and time using iPhone controls
- Realtime status will be set to off if date or time changes



SOLENT CURRENTS 2017



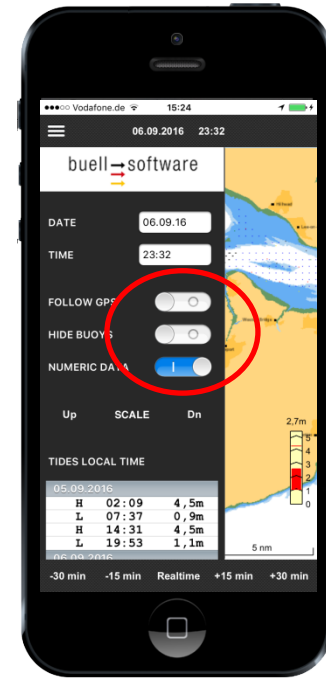
CURRENT VIEWER





SWITCHES

- Set **FOLLOW GPS** to keep center of map at GPS position
- Set **HIDE BUOYS** to clear map from drawings of buoys
- Set **NUMERIC DATA** to additionally display currents in figures: degrees (direction „from“) and kts.



SOLENT CURRENTS 2017

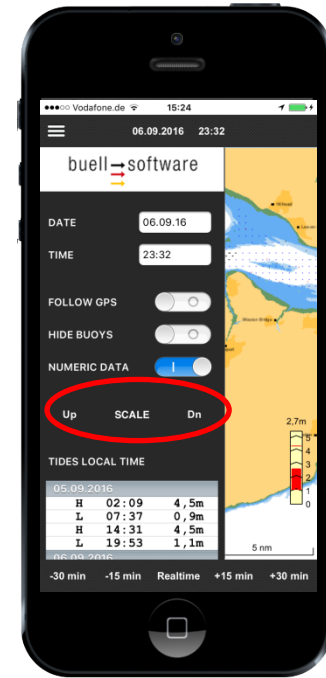


CURRENT VIEWER



→ SCALING

- Scale size of current arrows **Up** or **Dn** for better visualization



→ SOLENT CURRENTS 2017 → CURRENT VIEWER →

→ PURCHASE

Find SOLENT CURRENTS 2017 on

- AppStore (<http://apple.co/2iTPQT3>)
- www.buell-software.com

→ SOLENT CURRENTS 2017
→ CURRENT VIEWER
→