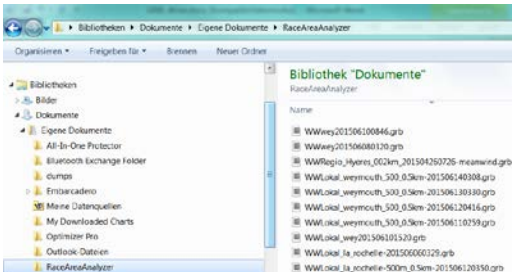


## GRIB current import

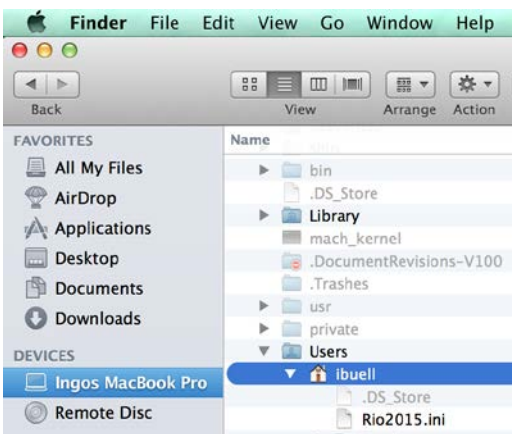
### 1. GRIB file location



#### Windows:

Create new folder `\RaceAreaAnalyzer\GRIBCurrent` in your documents folder.

Store GRIB files `*.grb` into that folder.

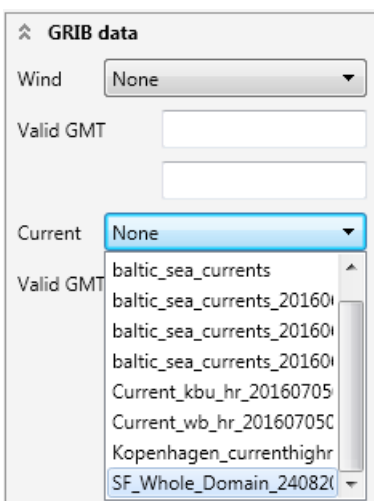


#### MacOS:

Find folder `Users\your name\GRIBCurrent` (here `Users\ibuell`).

Store GRIB files `*.grb` into that folder.

### 2. Load GRIB current file



Open ComboBox and find stored GRIB files.

Select file.

Select `None` to reset GRIB data.

Check valid date and time of GRIB file to display data.

### 3. Examples

#### San Francisco GRIB file

