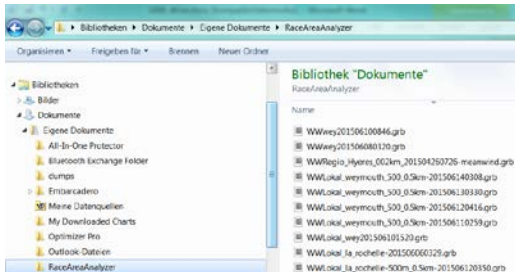


GRIB wind import

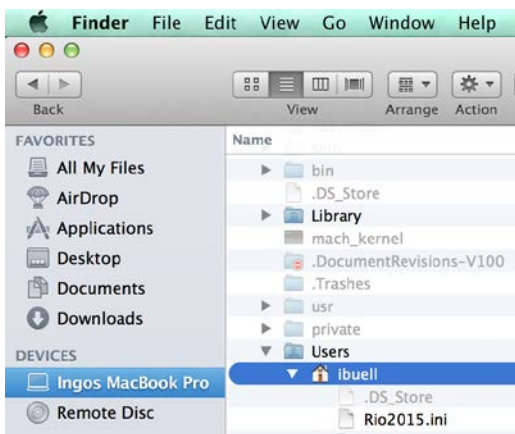
1. GRIB file location



Windows:

Create new folder `\RaceAreaAnalyzer\GRIBWind` in your documents folder.

Store GRIB files `*.grib` into that folder.

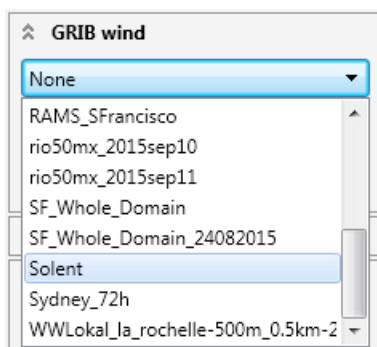


MacOS:

Find folder `Users\your name\GRIBWind` (here Users\ibuell).

Store GRIB files `*.grib` into that folder.

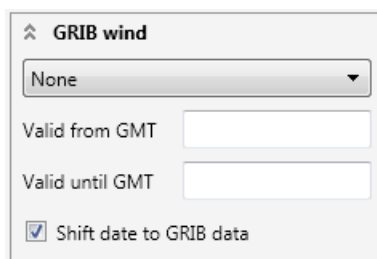
2. Load GRIB wind file



Open ComboBox and find stored GRIB files.

Select file.

Select `None` to reset GRIB data.

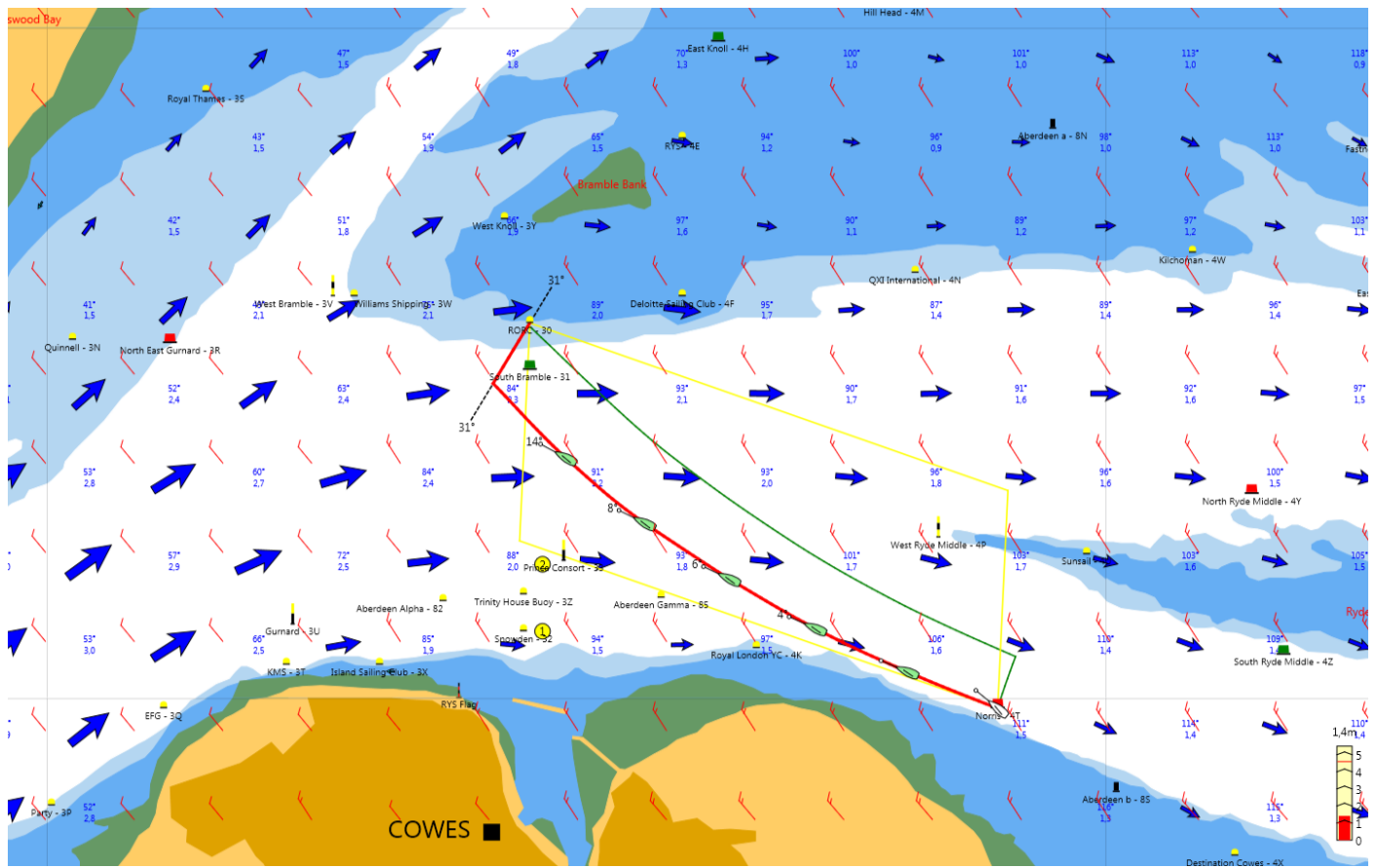


Check valid date and time of GRIB file.

Data will be displayed only if time period fits selected start time or `Shift data to GRIB data` has been activated.

3. Examples

The Solent 500m wind GRIB file



San Francisco 200m wind GRIB file

