

Race Area Analyzer – Solent

Windows / Mac

Routing & Tactics

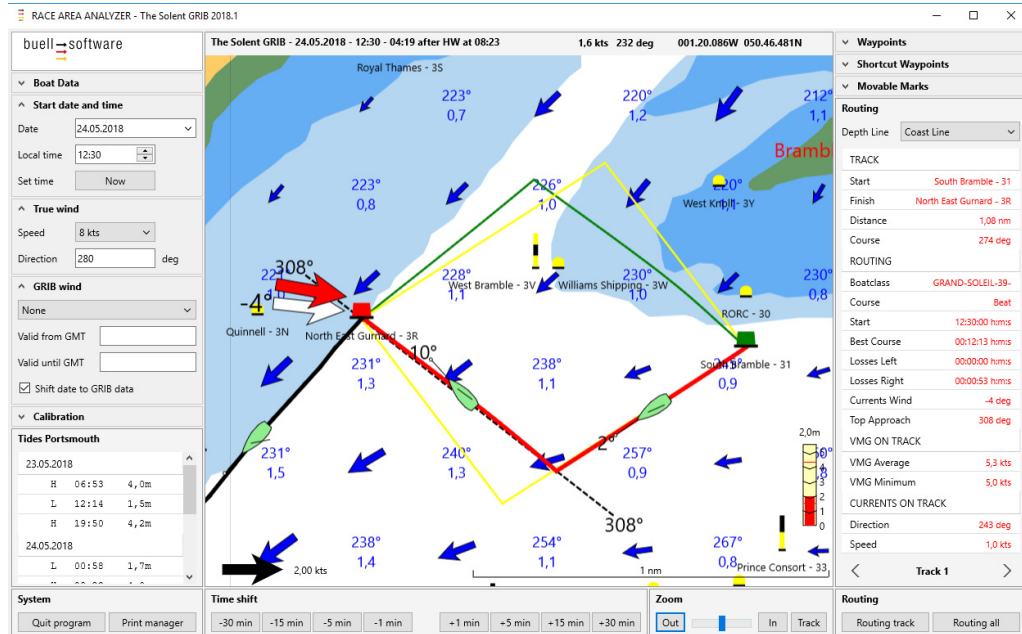
buell software gmbh
Esmarchstraße 53
24105 Kiel

Content

1	Routing Analysis.....	1
2	Results in figures.....	2
3	Tactical Advice	3
3.1	Angle of Attack.....	3
3.2	Wind – Shift by Currents.....	3
3.3	Compass Course to Top Mark.....	4

1 Routing Analysis

Once you have defined your track and clicked “routing” (as explained in the tutorial “Getting Started”) you will receive an analysis like this:



The spotlight is on the first leg:

- The RED line indicates the BEST COURSE.
- The GREEN line marks the alternative lay line.
- The YELLOW lines indicate how lay lines would be in conditions without currents.

Check the advantage of best course in the results at the right hand side:

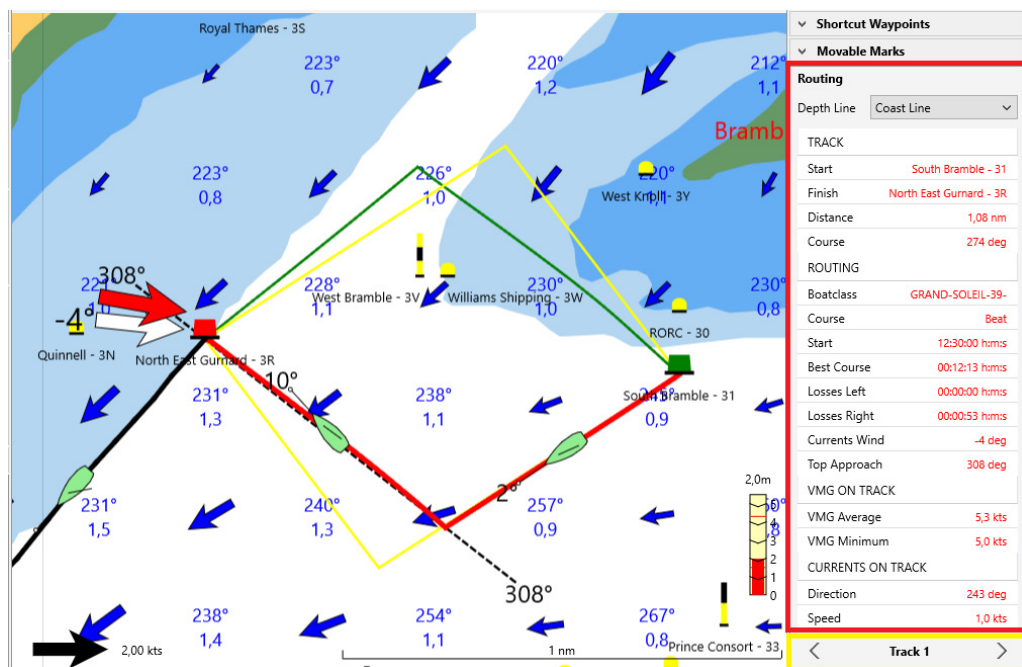
Start	12:30:00 h:m:s
Best Course	00:12:13 h:m:s
Losses Left	00:00:00 h:m:s
Losses Right	00:00:53 h:m:s
Currents Wind	-4 deg

2 Results in figures

At the right hand side you can check advantage of best course plus multiple other technical data in figures like:

- Losses on the less performant side.
- Wind shift caused by currents
- Compass course to top mark for final tack.
- VMG
- Currents on track – speed and direction

At the bottom right you can switch between the tracks to see the analysis of further leg(s).



3 Tactical Advice

3.1 Angle of Attack

On the red course you can see little boats.

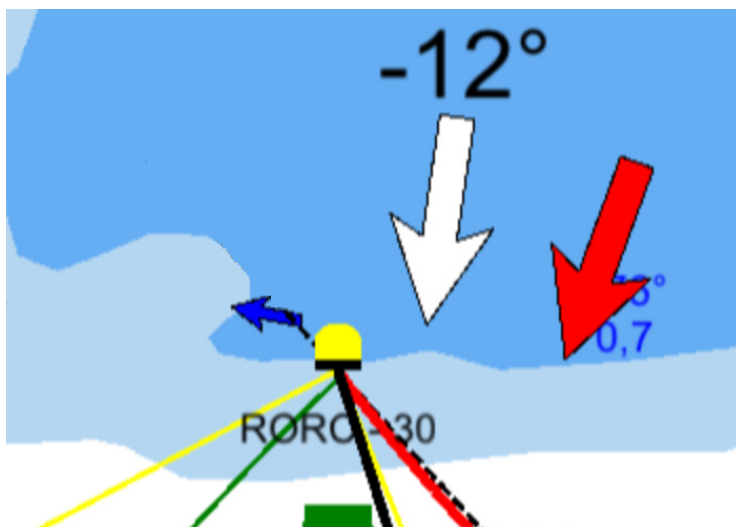
They show how much the angle of attack varies from the direct way to the next mark and display the deviation in figures.



3.2 Wind – Shift by Currents

At the top mark you see a

- RED arrow that indicates the direction of true wind.
- WHITE arrow that demonstrates the shift of wind caused by the currents. The wind shift is also displayed in figures.



3.3 Compass Course to Top Mark

At upwind legs we also display the compass course to the top mark for the final tack. To avoid from under- or overtaking.

